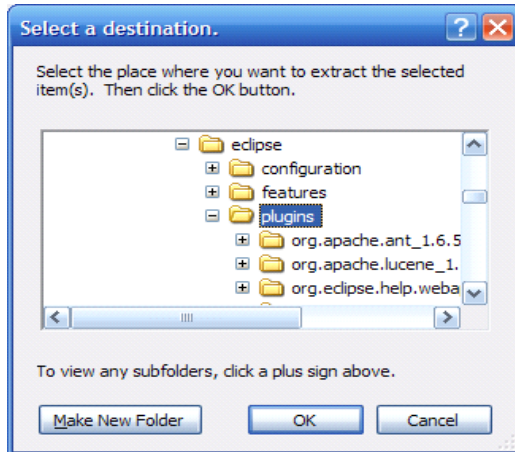
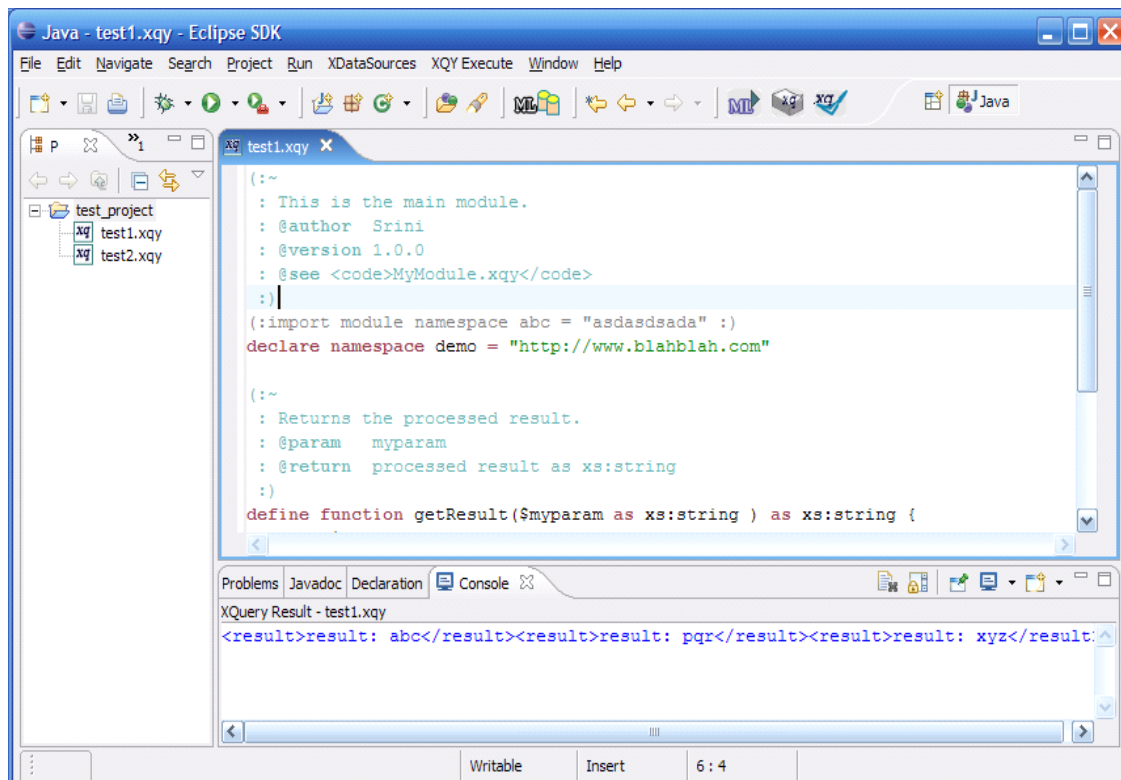


Installation instructions for xqIde, eclipse plug-in for xquery

1. Download the plug-in (zip file) from <http://www.xqdoc.org>
2. Close any eclipse IDE instance open.
3. Open the downloaded plug-in zip file and extract the contents into eclipse plug-in directory. If eclipse is installed in C:/ drive, extract content into C:/eclipse/plugins



4. Open eclipse IDE and the XQuery plug-in will be ready to use.



As this is a free tool, support at this time is very limited. Please send an email at srinivasa.devineni@lexisnexis.com for any help, suggestions, feedback etc.